

Real Palace Blue

Best
Scenery

Cozy
Environment

Secure
Space



REAL PALACE, A CONSTRUCTION AND DEVELOPMENT COMPANY, IS CURRENTLY ENGAGED IN CONSTRUCTION OF THE REAL PALACE BLUE PROJECT. OUR COMPANY HAS BEEN ACTIVE IN THIS INDUSTRY SINCE 2011 AND HAS SUCCESSFULLY EXECUTED MORE THAN 12 PROJECTS IN VARIOUS CITIES ACROSS GEORGIA, SUCH AS:

1.BLACK SEA TOWERS – A PREMIUM-CLASS RESIDENTIAL COMPLEX IN BATUMI AT THE ALLEY OF HEROES, FEATURING TWO TOWERING FORTY-STORY BUILDINGS AND ACCOMMODATING MORE THAN 1200 DELIGHTED RESIDENTS.

2.REAL PALACE PIROSMANI – A COMPLEX CONSISTING OF 4 BUILDINGS AND MORE THAN 1600 APARTMENTS, RECOGNIZED AS ONE OF THE FINEST IN BATUMI.

3.REAL PALACE DUMBADZE – A PREMIUM-CLASS RESIDENTIAL 5-STORY BUILDING SITUATED ON EUROPEAN SQUARE, THE HISTORIC HEART OF BATUMI.

4.REAL PALACE GREEN, TBILISI PALACE, CALLIGRAPHY HOTEL AND MANY MORE. WE BELIEVE THAT OUR EXPERIENCE AND THE TRUST OF OUR CUSTOMERS ENABLE US TO CREATE AND EXECUTE PROJECTS THAT TAKE INTO CONSIDERATION EVERY REQUEST AND PREFERENCE OF OUR CLIENTS.

Total amount of investments made

The overall investment sum amounts to 118 000 000 US Dollars



The combined area of constructed residential and commercial spaces is 389,000 square meters.

About the Project:

Real Palace Blue – a new premium-class high-rise residential building situated in Batumi, in the rapidly developing district area, just 180 meters from the seaside. Located along the shoreline in the New Boulevard, it's a place where tourism, business, and daily life converge harmoniously. This is where you can choose apartments that offer magnificent panoramic views of the city, the mountains, and the Black Sea

Real Palace Blue features a contemporary architectural design with classic elements, drawing inspiration from the captivating beauty of the sea and the mountains.



WE USE PREMIUM QUALITY MATERIALS THAT ADHERE TO INTERNATIONAL STANDARDS TO ENSURE YOUR EVERYDAY COMFORT!

1) MODERN CONSTRUCTION TECHNOLOGY - DOKA DEK



2) REYNOBOND - ENERGY-EFFICIENT ALUMINUM PANELS DESIGNED FOR VENTILATED FACADES



3) ALUMINUM DOORS AND WINDOWS WITH KOMMERLING GLASS PACKAGE GUARDIAN, ACCESSORIES



4) HIGH-SPEED ELEVATORS - KLEEMANN GERMANY, V- 2.5 M/S



5) SEISMIC RESISTANCE RATED AT 7 ON THE RICHTER SCALE

6) MODERN FIRE PROTECTION SYSTEM



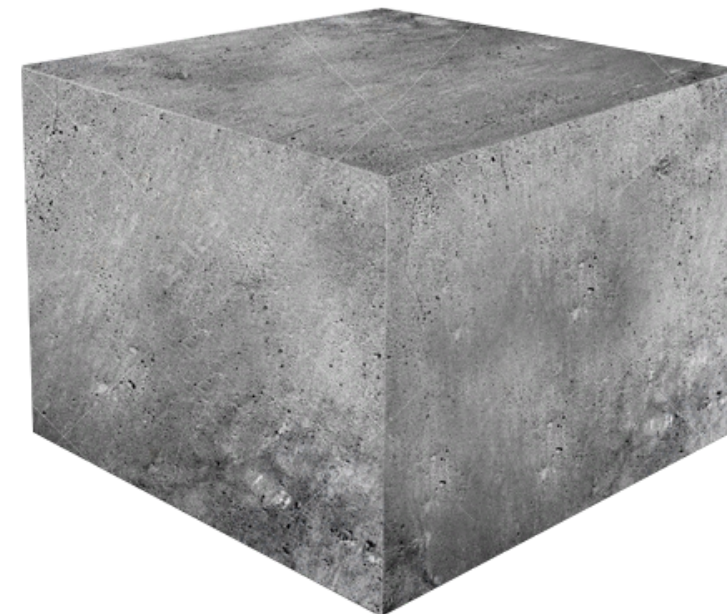
Characteristics of the reinforced concrete structure within the Real Palace Blue project

Foundation parameters:

- ✓ Foundation pit: depth 6 m
- ✓ Piles: installed at H=14 m depth
- ✓ Reinforced concrete cushion, H=1.8 m; W=27,7 m; L=60,2 m

Materials:

- ✓ 1. Steel framework of A500 class
- ✓ 2. Concrete B-35; M-450

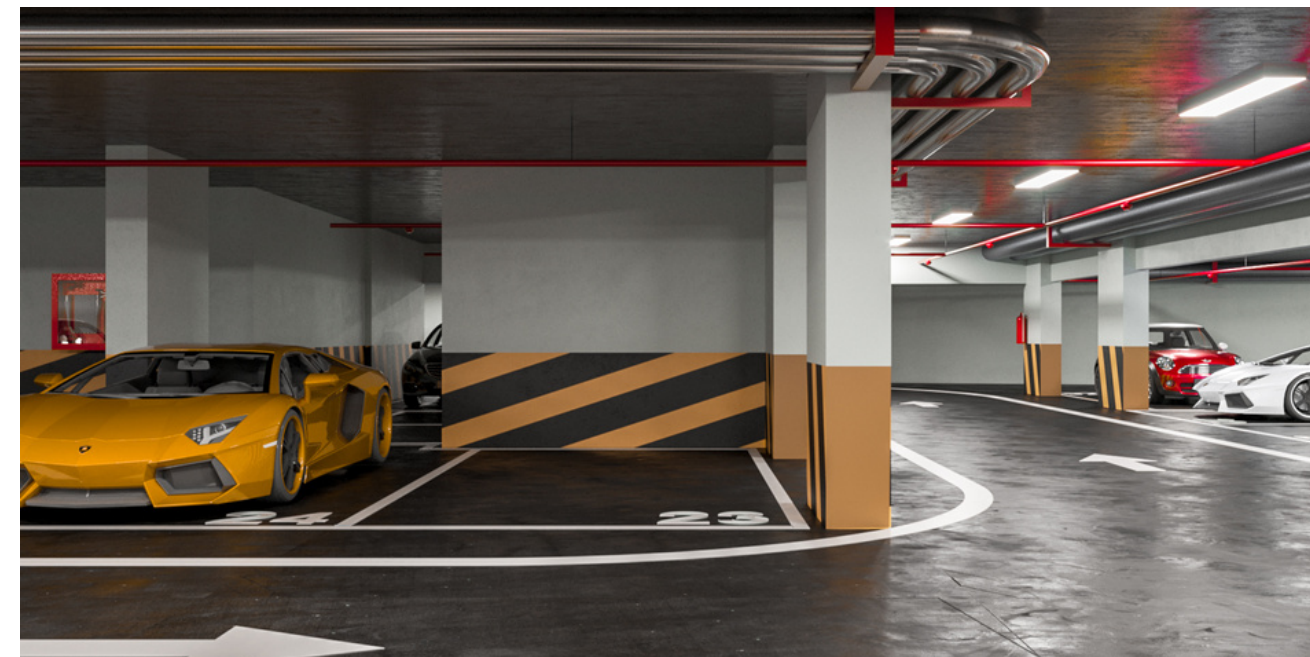


Our complex provides you with **RECEPTION**



Underground Parking

For up to 100 Cars



Open terrace and contactless café



The project incorporates all the components for your life of comfort



INVESTING IN REAL PALACE BLUE ENSURES A RELIABLE INCOME STREAM. YOU CAN CHOOSE TO RENT OUT YOUR APARTMENT FROM THE BEGINNING OR TRANSFER IT TO A MANAGEMENT COMPANY THAT WILL HANDLE ALL ASPECTS OF MANAGEMENT, MAINTENANCE AND RENTAL, GUARANTEEING YOUR FINANCIAL BENEFIT.

INVESTING IN REAL PALACE BLUE IS POSSIBLE WITH A MINIMUM OF 32,000 USD

AFTER EXTENSIVE MONITORING BY OUR PARTNER COMPANIES ENGAGED IN SALES, IT HAS BEEN DEFINED THAT PREMIUM-CLASS RESIDENTIAL REAL ESTATE IN BATUMI EXPERIENCES AN ANNUAL PRICE INCREASE OF 10-15%. THIS INCREASE CAN BE ATTRIBUTED TO:

STRATEGIC LOCATION, GASIFICATION IN THE BUILDING, THE RELIABILITY OF THE COMPANY, OVERALL QUALITY, ETC.

THESE ELEMENTS ENSURE YEAR-ROUND OCCUPANCY AND INVESTMENT. TAKING THESE FACTORS INTO ACCOUNT, WE CAN ASSERT WITH CONFIDENCE THAT THE MENTIONED PROJECT UNDOUBTEDLY HOLDS A LEADING POSITION IN THIS LOCATION.

IF YOU OPT TO PURCHASE AN APARTMENT FOR THE RENTING PURPOSE, YOU CAN BENEFIT FROM VARIOUS METHODS OF REAL ESTATE MANAGEMENT

1) INDEPENDENT MANAGEMENT - THE OWNERS MANAGE THE PROCESS OF FINDING VACATIONERS AND RENTING THE APARTMENT INDEPENDENTLY.

COLLABORATION WITH THE MANAGEMENT COMPANY WHICH ENSURES SOURCING OF VACATIONERS AND THE RENTAL OF THE REAL ESTATE.

Real Palace Blue



With one bedroom

57.1 ȳ²



Studio

36.2 ȳ²



With one bedroom

60.2 ȳ²



With two bedrooms

78.6 ȳ²

29

Number of
floors

20

Number of apartments per
floor

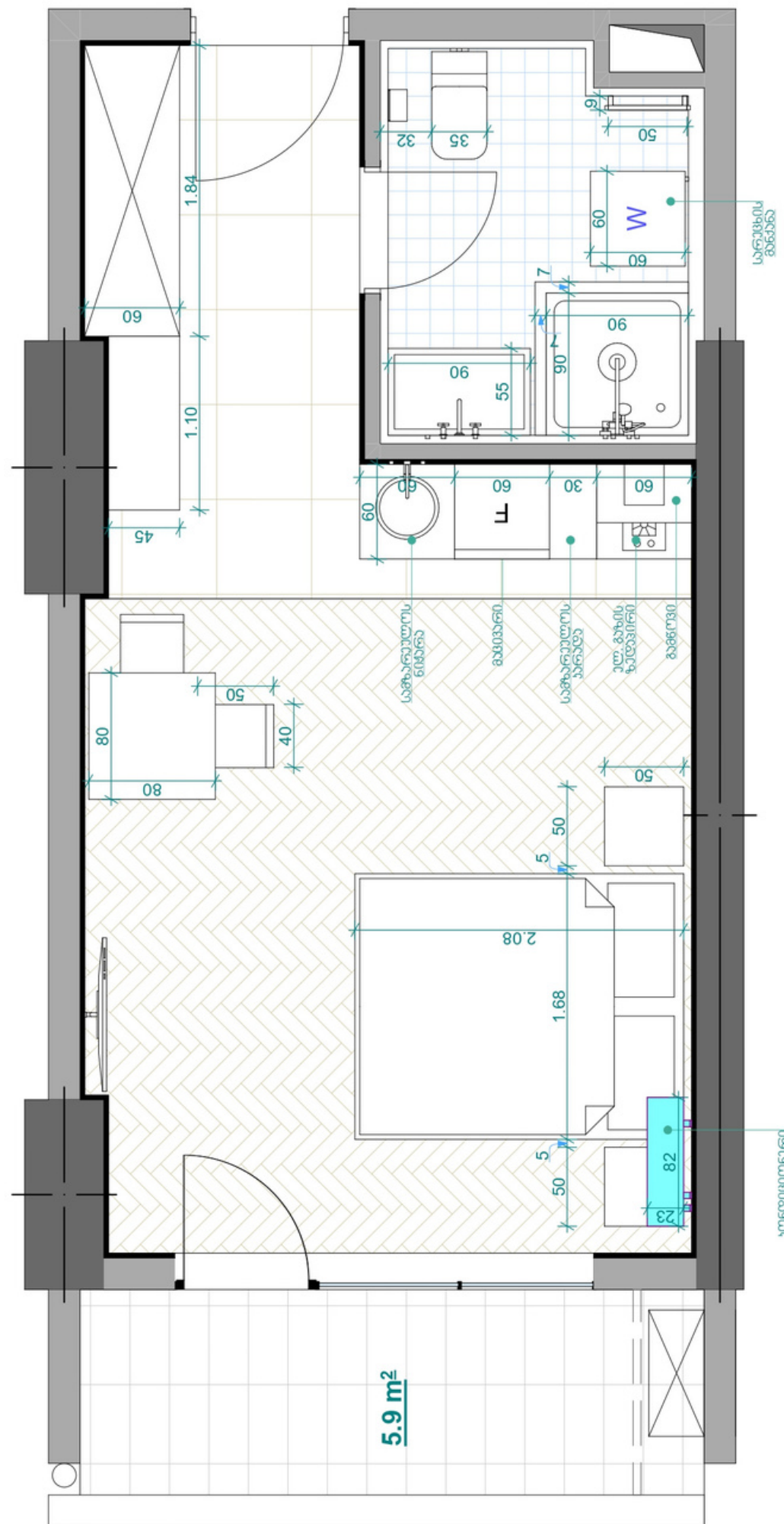
35.7

Minimum apartment
area

93.3

Maximum apartment
area

OUR APARTMENTS ARE IN A “GREEN FRAME” CONDITION



- 01 Completed construction-installation works;
- 02 Completed building façade;
- 03 Faced and painted hallway;
- 04 Installed elevator;
- 05 Installed aluminum doors and windows on the exterior;
- 06 Installed entrance door in the residential apartment;
- 07 Water and sewage vertical braces connected and laid out in the residential apartment according to the standard project design;
- 08 16 mm diameter metal-plastic covered heating pipes installed according to the standard project design;
- 09 Electrical wiring connected to the residential apartment according to the standard project design. A total of 18 connection points;
- 10 Coupled floor, except for in the wet point;
- 11 Built internal pillars according to the standard project design;
- 12 Daubed pillars (walls);
- 13 Central natural gas supply connected to the hallway;
- 14 Ensured waterproofing on the balcony, with floor faced with ceramic tiles.



SALES@REALPALACE.GE



WWW.REALPALACE.GE



+995 557 78 47 47



+995 514 65 47 47



+995 577 22 47 47